

# THE Solstice



EMBASSY  
SUITES  
by Hilton™

Orlando Sunset Walk

## STUDIO (S)

1 BEDROOM • 1 BATH

514 AC SQ. FT.



**EmbassySuitesSunsetWalk.com • 407.627.1758**  
**3240 Margaritaville Blvd., Kissimmee, FL 34747**

Virtual reality plans, elevations and/or renderings are artists' conception, not to scale and may contain options or features which are not standard on all residences. Embassy Suites by Hilton Orlando Sunset Walk reserves the right to make changes to these floorplans, features, specifications, dimensions and elevations without prior notice. Stated dimensions and square footage are approximate and should not be used as representation of the homes precise or actual size. Any statement, verbal or written, regarding "under air", "living area" or "finished area" or any other description or modifier of the square footage size of any home is a shorthand description of the manner in which the square footage was estimated and should not be construed to indicate certainty.

"Embassy Suites by Hilton" is a registered trademark of Hilton International Holding LLC, an affiliate of Hilton Worldwide Holdings Inc. (together with its affiliates, "Hilton"). The residences are not owned, developed, or sold by Hilton and Hilton does not make any representations, warranties or guaranties whatsoever with respect to the residences. The developer uses the Embassy Suites by Hilton brand name and certain other Embassy Suites by Hilton trademarks (the "Trademarks") under a limited, non-exclusive, non-transferable license from Hilton. The license may be terminated or may expire without renewal, in which case the residences described herein will not be identified as an Embassy Suites by Hilton branded project or have any rights to use the Trademarks."

# THE Solstice



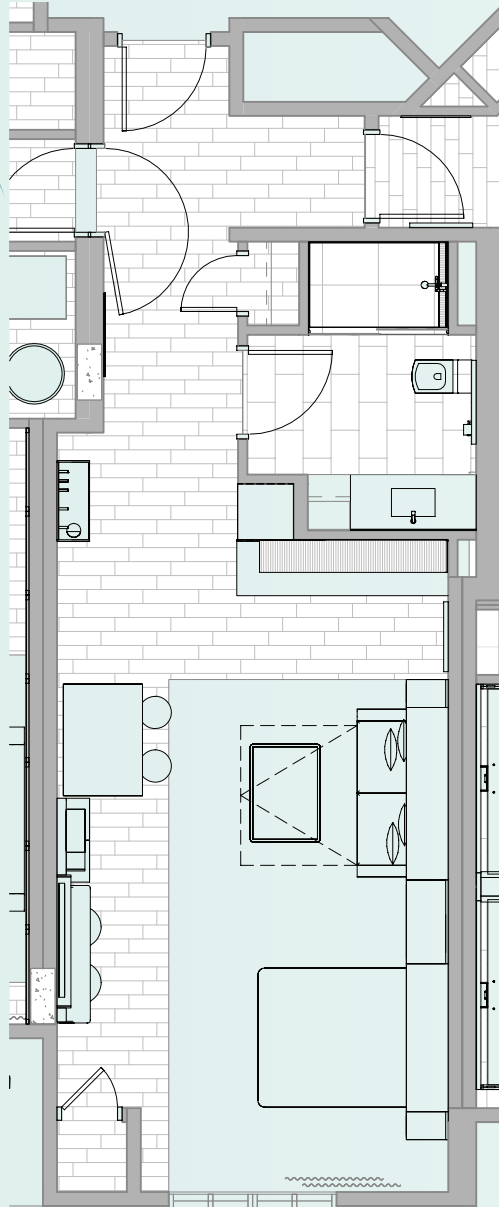
EMBASSY  
SUITES  
by Hilton™

Orlando Sunset Walk

## STUDIO (S1)

1 BEDROOM • 1 BATH

600 AC SQ. FT.



**EmbassySuitesSunsetWalk.com • 407.627.1758**  
**3240 Margaritaville Blvd., Kissimmee, FL 34747**

Virtual reality plans, elevations and/or renderings are artists' conception, not to scale and may contain options or features which are not standard on all residences. Embassy Suites by Hilton Orlando Sunset Walk reserves the right to make changes to these floorplans, features, specifications, dimensions and elevations without prior notice. Stated dimensions and square footage are approximate and should not be used as representation of the homes precise or actual size. Any statement, verbal or written, regarding "under air", "living area" or "finished area" or any other description or modifier of the square footage size of any home is a shorthand description of the manner in which the square footage was estimated and should not be construed to indicate certainty.

"Embassy Suites by Hilton" is a registered trademark of Hilton International Holding LLC, an affiliate of Hilton Worldwide Holdings Inc. (together with its affiliates, "Hilton"). The residences are not owned, developed, or sold by Hilton and Hilton does not make any representations, warranties or guaranties whatsoever with respect to the residences. The developer uses the Embassy Suites by Hilton brand name and certain other Embassy Suites by Hilton trademarks (the "Trademarks") under a limited, non-exclusive, non-transferable license from Hilton. The license may be terminated or may expire without renewal, in which case the residences described herein will not be identified as an Embassy Suites by Hilton branded project or have any rights to use the Trademarks."